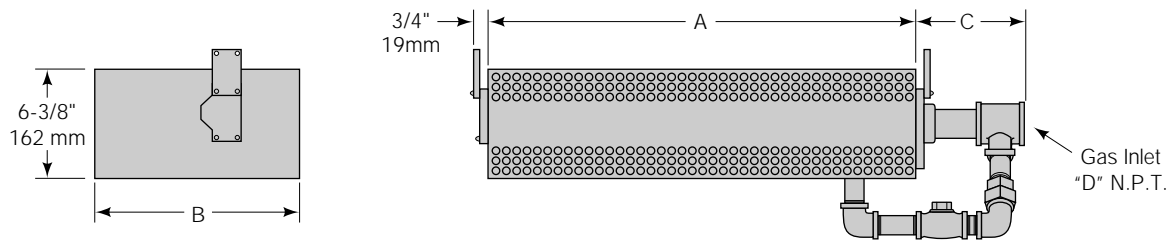


ECLIPSE AIR HEAT BURNERS

Dimensions—Series "AH-O"

Data 144-1

11/93



U.S. Reissue Pat. No. 26,244
Canadian Pat. No. 743,782

English Units

Burner Cat. No.	Assy. No.	Total Input (MM Btu/Hr.)		Dimensions In Inches				Cross Sect. Area Sq. In.	Approx. Ship Wt. Lbs.
		0.8 MM Btu/Ft.	1.0 MM Btu/Ft.	A	B	C	D		
40 AH-O	109560	0.4	0.5	6-1/8	10-9/16	9-3/8	2	39	49
80 AH-O	109561	0.8	1.0	12-1/8	10-9/16	9-3/8	2	77	63
120 AH-O	109562	1.2	1.5	18-1/8	10-9/16	9-1/2	2	116	77
160 AH-O	109563	1.6	2.0	24-1/8	12-5/16	9-1/2	2	154	91
200 AH-O	109564	2.0	2.5	30-1/8	12-5/16	9-1/2	2	192	105
240 AH-O	109565	2.4	3.0	36-1/8	12-5/16	9-1/2	2	230	126
280 AH-O	109566	2.8	3.5	42-1/8	12-5/16	9-7/8	2	269	144
320 AH-O	109567	3.2	4.0	48-1/8	12-5/16	9-7/8	2	307	172
360 AH-O	109568	3.6	4.5	54-1/8	12-5/16	9-7/8	2	345	180
400 AH-O	109569	4.0	5.0	60-1/8	12-5/16	9-7/8	2	383	204
440 AH-O	109570	4.4	5.5	66-1/8	12-5/16	10-1/2	3	422	222
480 AH-O	109571	4.8	6.0	72-1/8	12-5/16	10-1/2	3	460	258
520 AH-O	109572	5.2	6.5	78-1/8	12-5/16	10-1/2	3	498	300
560 AH-O	109573	5.6	7.0	84-1/8	12-5/16	10-1/2	3	536	324
600 AH-O	109574	6.0	7.5	90-1/8	12-5/16	11	3	575	360
640 AH-O	109575	6.4	8.0	96-1/8	12-5/16	11	3	613	372
720 AH-O	109576	7.2	9.0	108-1/8	12-5/16	11	3	689	450
800 AH-O	109577	8.0	10.0	120-1/8	12-5/16	11	3	766	475

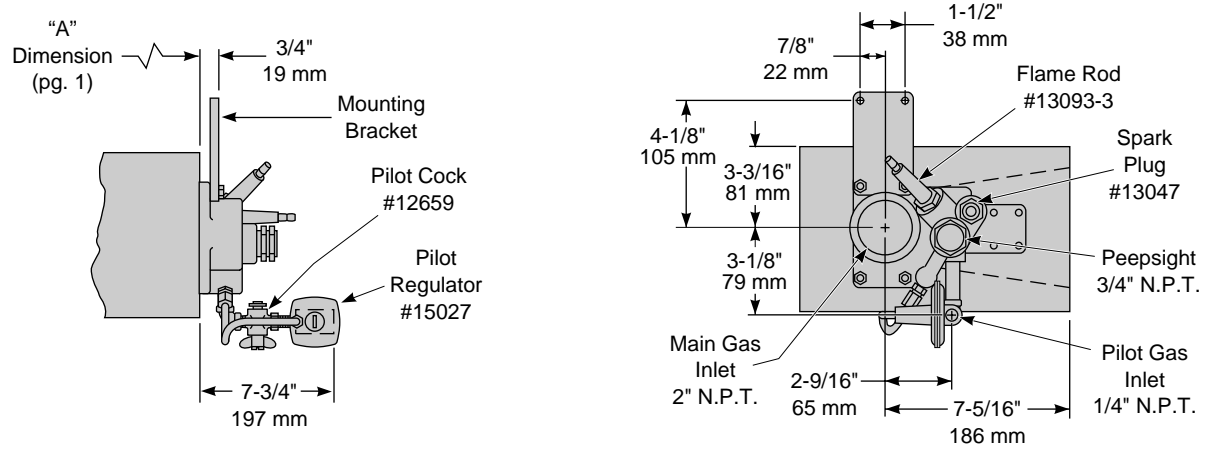
Metric Units

Burner Cat. No.	Assy. No.	Total Input kW		Dimensions In Millimeter				Cross Sect. Area Sq. Cm.	Approx. Ship Wt. Kgs.
		769 kW/M	962 kW/M	A	B	C	D		
40 AH-O	109560	117	147	156	268	238	2"	252	22
80 AH-O	109561	234	293	308	268	238	2"	497	29
120 AH-O	109562	352	440	460	268	241	2"	748	35
160 AH-O	109563	469	586	613	313	241	2"	994	41
200 AH-O	109564	586	733	765	313	241	2"	1239	48
240 AH-O	109565	703	879	918	313	241	2"	1484	57
280 AH-O	109566	821	1026	1070	313	251	2"	1736	65
320 AH-O	109567	938	1172	1222	313	251	2"	1981	78
360 AH-O	109568	1055	1319	1375	313	251	2"	2226	82
400 AH-O	109569	1172	1466	1527	313	251	2"	2471	93
440 AH-O	109570	1290	1612	1680	313	267	3"	2723	101
480 AH-O	109571	1407	1759	1832	313	267	3"	2968	117
520 AH-O	109572	1524	1905	1984	313	267	3"	3213	136
560 AH-O	109573	1641	2052	2137	313	267	3"	3458	147
600 AH-O	109574	1759	2198	2289	313	279	3"	3710	163
640 AH-O	109575	1876	2345	2442	313	279	3"	3955	169
720 AH-O	109576	2110	2638	2746	313	279	3"	4445	204
800 AH-O	109577	2345	2931	3051	313	279	3"	4942	206



ECLIPSE COMBUSTION, INC.

Pilot Components & Dimensions



Check Valve Assembly Numbers

Burner	Assy.	N.P.T.
40 & 80 AH-O	550088	1/2"
120 & 160 AH-O	550092	3/4"
200 & 240 AH-O	550096	1"
280 thru 400 AH-O	550100	1-1/4"
440 thru 640 AH-O	550104	1-1/2"
720 thru 800 AH-O	550108	2"



ECLIPSE COMBUSTION, INC.



Offered By:

Power Equipment Company
2011 Williamsburg Road
Richmond, Virginia 23231
Phone (804) 236-3800
Fax (804) 236-3882

www.peconet.com